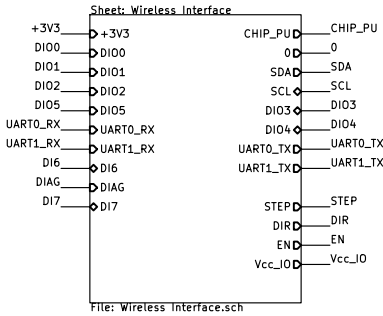
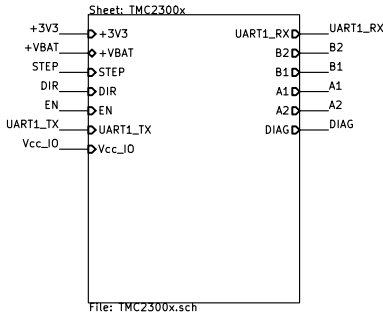
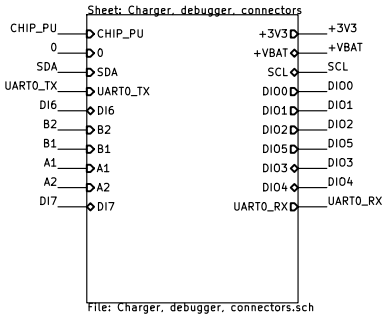


- 14.10.2019 – v1.0
- Basic version of the design
- 15.01.2020 – v2.0
- Added D7 and R21 to indicate network connection status
 - Changed the values of R1, R2, R14, R15 from 220Ω to 1kΩ
 - Changed the values of R16 from 330Ω to 1kΩ
 - Added B00T button circuit (SW2, R22 and C25)
 - Replaced the CH340E bridge with CH340C and added C23, C24
 - Swapped the positions of D5 and R16
 - Swapped the connections of J6
 - Swapped the UART0 and UART2 lines
 - Used the correct symbol of TMC2300 (P11: VIO/NSTDBY, P12: DIAG)
- 04.03.2020 – v3.0
- Swapped the connections of J6
 - D7 and R21 to pin 16 of ESP32 (IO27)
 - Connected pins A6 and B6 of J1
 - Connected pins A7 and B7 of J1
- 10.11.2020 – v4.0
- Pin 8 (STEPPER) of TMC2300 connected to Vio_STDBY
 - Pulldown added to TMC2300 ENABLE pin
 - R5 shall be assembled by default
 - Small signal transistor added to switch Vcc_IO to the TMC2300
 - IO12/MTDI not used
 - Remaped DIO1 to pin 38
 - Connected the 2 mounting holes to GND
 - Q1 replaced with D8
 - Sense resistor values changed from 220 mΩ to 180 mΩ for slightly more max current (ca. 1A rms)



Trinamic Motion Control
LK



Sheet: /
File: TMC2300-IOT-REF v4.0.sch

Title: TMC2300-IOT-REF

Size: A4	Date: 2020-11-04	Rev: 4.0
KiCad E.D.A. kicad (5.1.8)-1		Id: 1/4

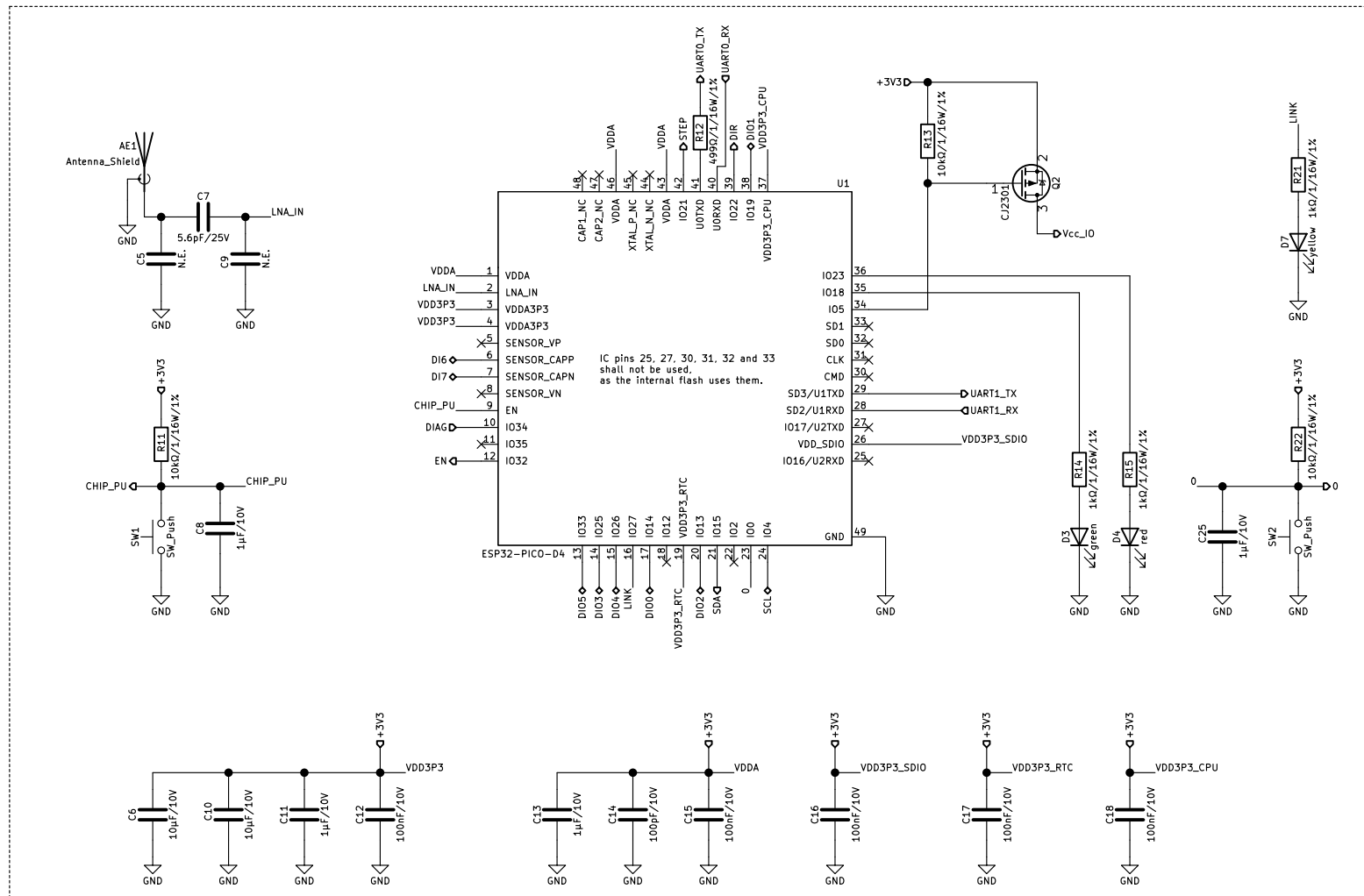


Title: TMC2300-IOT-REF

Rev: 4.0

Id: 2/4

Wireless interface



Trinamic Motion Control



Sheet: /Wireless Interface/
File: Wireless Interface.sch

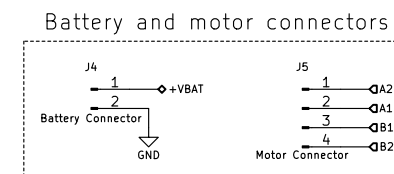
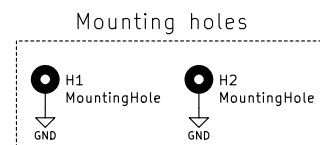
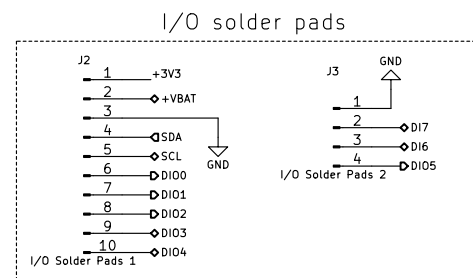
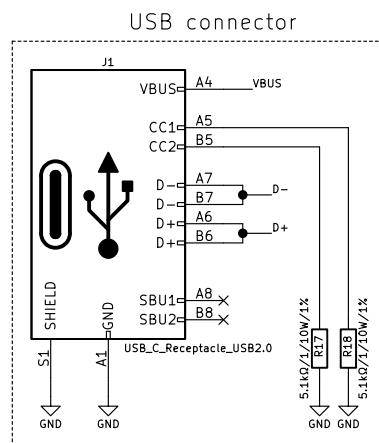
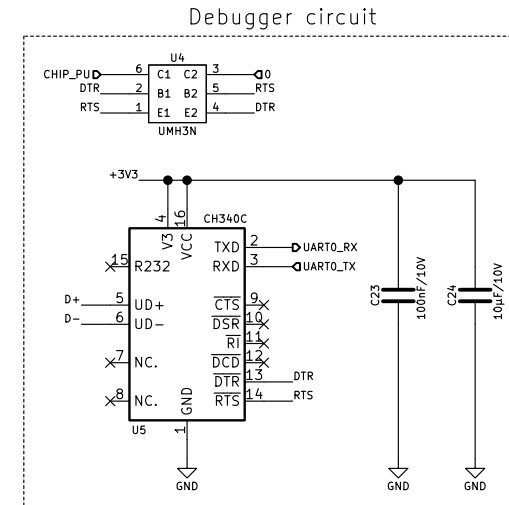
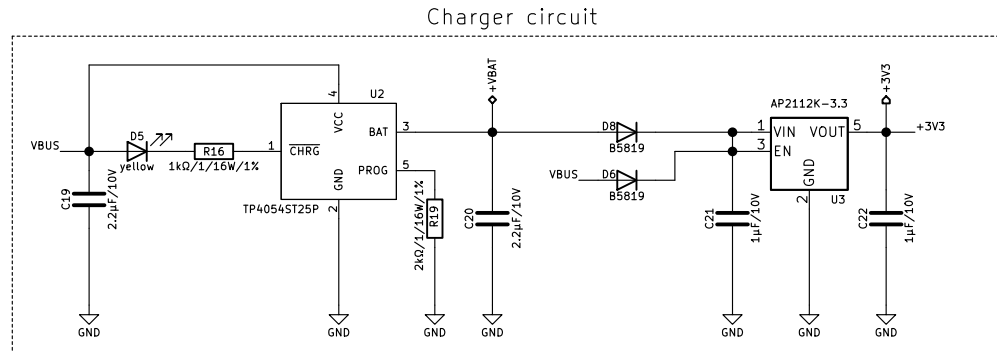
Title: TMC2300-IOT-REF

Size: A4	Date: 2020-11-04
----------	------------------

Rev: 4.0

KiCad E.D.A. kicad (5.1.8)–1

Id: 3/4



Trinamic Motion Control



Sheet: /Charger, debugger, connectors/
File: Charger, debugger, connectors.sch

Title: TMC2300-IOT-REF

Size: A4 Date: 2020-11-04

Rev: 4.0

KiCad E.D.A. kicad (5.1.8)-1

Id: 4/4